

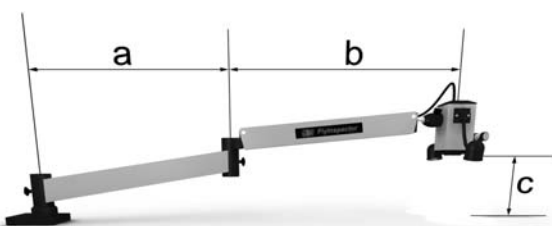
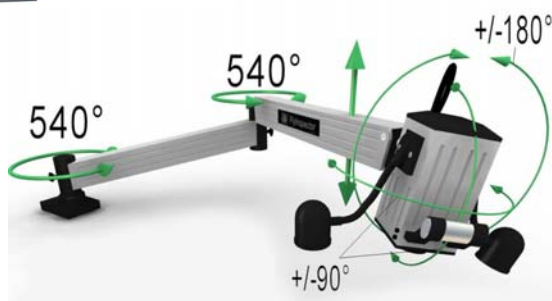
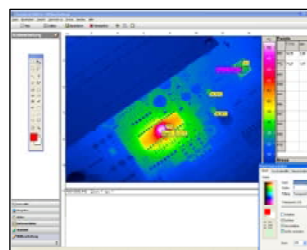
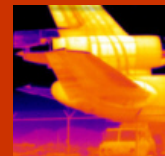
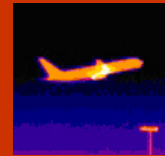
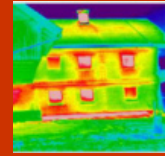
Fly-IR

Autofocus Infrared Camera Head



Technical specifications:

- Microbolometer 320 x 240 (uncooled, exportlicense free)
- Special fine resolution mode 640x480 pixel
- Autofocus for each lens
- Spectral sensitivity 7,5 ... 14 μm
- Weight 2kg camera
- Measure range -40...+300 °C (customer specific up to 1000°C)
- Measure accuracy: +/- 1,5 K (0 - 100°C), over 100°C +/- 2%
- Thermal resolution < 90 mK (16 Bit resolution)
- Frame rate 50 Hz
- Standard lens (1.0/25mm, FOV 32° x 25°, Focus 0.28 m up to ∞) other lenses available
- Lens bayonet coupling
- Interface: IEEE1394A, RS232, Y/C (PAL/NTSC), CF-Card
- Integrated pilot camera for VIS
- Driver for LABVIEW available



FlyInspector-IR

The *FlyInspector-IR* camera system is an easy-to-handle inspection system for a wide spectrum of inspection tasks. The system has been developed for fast optical inspection. Here it serves as a so-called electrical imaging device attached to a positioning arm. The many axes of movement of this arm allow the inspection of a circular area of approx. 3.5m².

The positioning arm has been specially designed (self-balancing) to stay at the last position chosen and not to drift. The easily manoeuvrable arm quickly takes the camera head to the inspection site.

a=320mm
b=520mm
c=6-300mm