

Environmental simulation

Salt Fog – Salt Spray Test

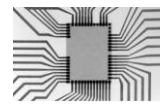
The salt fog and salt spray tests are used for intensified corrosion tests of metals and alloys. The increased degree of corrosion which the salt fog test implies is due to the very high concentration of an electrolyte which considerably enhances the speed of corrosion. The severity level of the test depends on the salt water concentration, the test temperature and the test cycle chosen. Samples which may later be operating in environments such as coastal regions (e.g. wind parks), off-shore (vessels) or road traffic (where de-icing salt is used) are subjected to salt fog tests to control their resistivity to corrosion.

Standards:

e.g. DIN EN 60068-2-11, DIN 50021
VW80101_DE_2005-06-01;
BMW GS 95003-4 ET+EK-BG Klimatests;
IP-protective classes

Characteristics and Advantages:

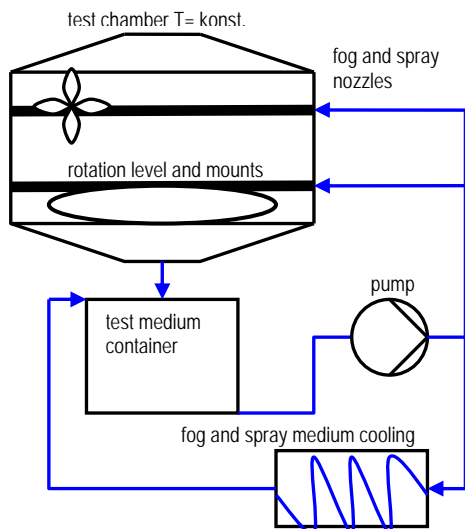
- Test chamber capacity 1,100 liters
- various fog and spray media:
 - salt solutions
 - salt solutions + Arizona dust
 - as per customer requirements
- test chamber temperature up to 120°C
- fog and spray media temperature between -30° and 100°C
- humidity up to 100%
- constant climatic conditions
- circulating air method
- various fog and spray patterns and intensity
- choice of number of nozzles
- any shape of nozzle possible
- fog and spray medium circulating and single-use methods
- Spraying: 100 liters / min
- parameter control/ recording
- test online / offline



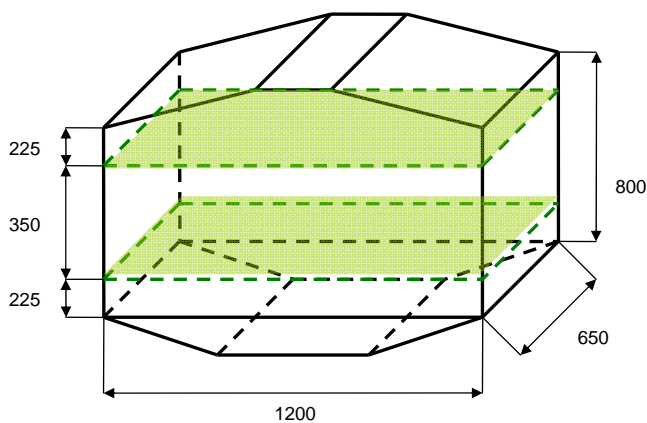
Technical specifications

test equipment for	dimensions of test chamber [cm]	temperature in chamber [°C]	temperature of fog and spray media [°C]	humidity[%]	volume flow fog and spray media [(liters/h)]
salt fog I	120x110x65	20-120	-30 to 100	up to 100	up to 6000

Technical details



schematic presentation salt fog test equipment



Test chamber dimensions

ctd 12.2006